



RIDER HANDBOOK

SPECIAL EQUESTRIANS, INC.





Special Equestrians, Inc.

PO Box 61528
Fort Myers, FL 33906-1528
telephone: 239.226.1221
fax: 239.226.1279
email: spequestrians@gmail.com
website: www.specialequestrians.net

RIDER HANDBOOK INDEX

	Page
WHAT YOU NEED TO KNOW ABOUT SPECIAL EQUESTRIANS	2
IMPORTANT INFORMATION FOR RIDERS	3
SPECIAL EQUESTRIANS SAFETY RULES AND REGULATIONS	4
PARTS OF HORSE AND PARTS OF HOOF	5
PARTS OF SADDLE AND PARTS OF BRIDLE	6
MAP AND EVACUATION ROUTES	7

WHAT YOU NEED TO KNOW

ABOUT SPECIAL EQUESTRIANS

Welcome to Special Equestrians Therapeutic Riding Program!

Therapeutic treatment with the Aid of a Horse: Therapeutic riding is designed to improve both mental and physical abilities. This improvement is accomplished with exercises that improve the riders' automatic balance, stimulates and stretches muscles, flexes joints, and strengthens postural responses. Eye and hand coordination is improved in learning to guide the horse, while the natural movement of the horse replicates human walking. The program also offers riders social, educational and recreational experiences. Some of our riders reach the level of achievement where they are able to ride a horse independently. For other riders, simply holding the reins is a significant goal. All successes, whether big or small, are important milestones in our riders' lives.

Program Information: Special Equestrians is a tax exempt public charity that has provided therapeutic riding to children and adults with disabilities in the Lee, Hendry, Charlotte and Glades counties since 1987. Special Equestrians is an all-volunteer self-administrative organization which is affiliated with the Professional Association of Therapeutic Horsemanship (PATH, Intl). The association's therapeutic teaching techniques and safety standards are adhered to in every aspect of the program. All of our instructors have extensive backgrounds in horsemanship and are certified by PATH, INTL.

Special Equestrians Horses: Horses are selected for their condition, gentleness, and suitability for the program. Each horse receives training and conditioning by the volunteer staff and instructors.

Volunteers: Volunteers participate in every aspect of the program. They lead horses, support riders as side-walkers during the lessons, care and feed the horses, maintain the barn, serve on the board of directors and assist in fund raising activities. The program is always in need of new volunteers.

Fees: The program is conducted year round and is divided into six-week sessions. There are eight consecutive sessions with a month off in the summer. A fee of seventy-two dollars (\$72.00) a session is charged per rider. Fees are payable at the beginning of each session.

Scholarships: Scholarships are available to qualified applicants. If a rider is granted a scholarship, it is hoped that they will give back to Special Equestrians by volunteering in an area of need, for at least 5 hours per 6 week session.

Completion of Forms: If you are on the waiting list, please complete all forms except the Medical Forms which will be completed by your physician. When you, or your child, are close to getting into a class, you will be notified to have the Medical Forms completed. Upon completion of the forms, please return them to the office. Our instructors will notify you, as to rider evaluation time, riding time and starting date.

SPECIAL EQUESTRIANS RIDERS

IMPORTANT INFORMATION

Dear Rider, Parent, Family Member, Guardian or Caregiver,

1. Please **sign in** when you arrive. Write **P** for present.
2. If you are not receiving emails from us, send us your email address at spequestrians@gmail.com. We will add you to our group email where you can receive all SE information we send out. If you do not have email, let us know and we will put you on the “always call” list.
3. If you know that you **will not be coming** the following week, write an **E** on the appropriate program days that you can't come. You can also call Dee at 239-470-2378 or Sherry at 239-822-7680, to let us know when you cannot come on a program day.
4. When a new session starts, **class fees** will be due. Payments are due at the beginning of a session.
5. You should have a **class schedule** that tells when a new session begins, the cost of the session and the dates that we are off. If you need another schedule, they are in the office and on the website, www.specialequestrians.net.
6. The due date for the next medical is on the **class sign-in clipboard**. Medicals are required to be completed by your doctor, once a year. If you see that it is getting close to the due date, pick up a form in the office and have it filled out, before the due date, please!
7. Please keep all **children off the fence** and away from the horse pastures. Our pasture fences are electrified.

Thank you for your help,

Dee Hollander

Justin Parchem

Eileen Coe

Amy Goss

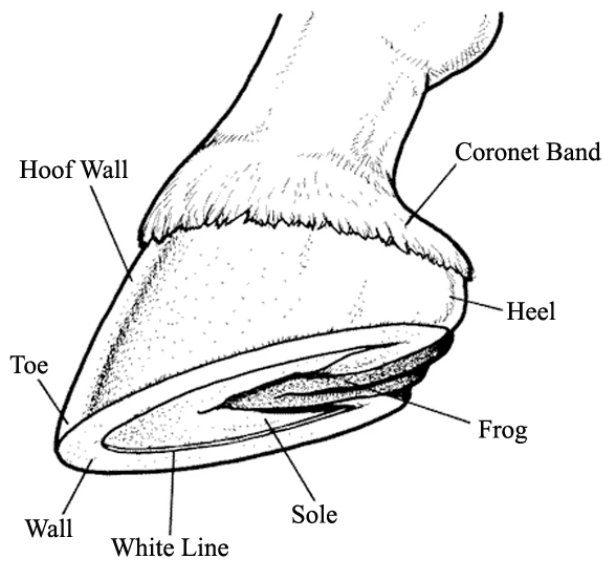
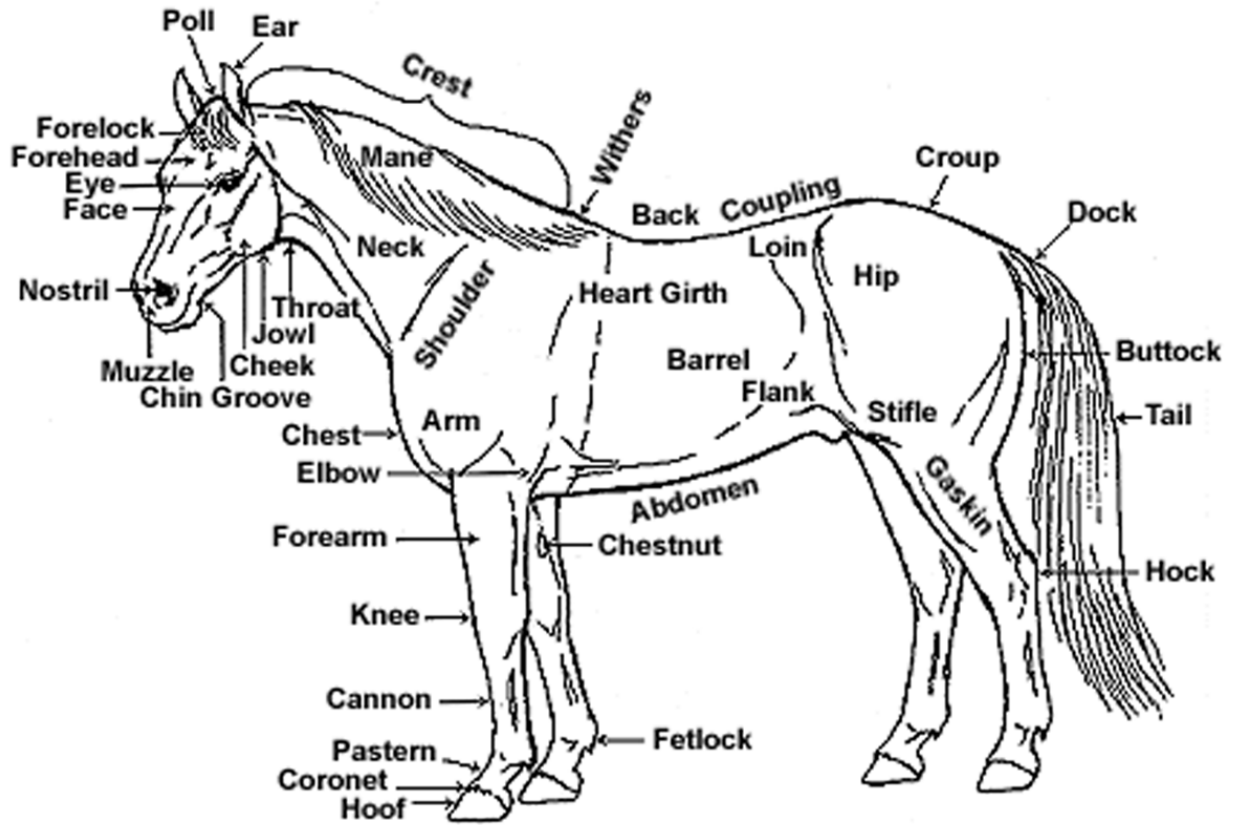
Your Special Equestrians Program Instructors

SPECIAL EQUESTRIANS SAFETY RULES & REGULATIONS

In order for Special Equestrians to protect its participants and visitors, as well as for insurance purposes, we request that you follow this set of rules. These rules are designed to ensure the safety of our participants, parents, caregivers, visitors, volunteers and staff. Thank you for your cooperation.

1. The instructor requires your complete attention at all times. In case of emergency, everyone will follow the directions given by the Instructor.
2. Please drive very slowly as you drive down the road into Special Equestrians. There are humans and horses walking on and beside the road.
3. **DO NOT WALK BEHIND THE HORSES.**
4. Only the Instructors and trained Staff will handle the mounting and dismounting of riders.
5. Only the Instructors and trained Staff will bridle and unbridle the horses.
6. Riders and parents may not enter the stable area unless they are accompanied by a volunteer or staff member.
7. Riders must wear safety helmets, long pants and closed-toe hard-soled shoes or boots. Helmets must be worn when riding and around the horses.
8. Do not feed the horses grass, carrots, apples, etc. unless you have permission from the instructor.
9. Children are not allowed to play on the fence, mounting ramp, mounting blocks, gates, or in the ditches.
10. Running, shouting and/or horseplay are not allowed.
11. Do not touch the pasture fence tape or wire. It is electric and it will give you a shock.
12. No chewing of gum when riding horses.
13. Riders will stay in the viewing area until it is their time to ride. They will be taken up the ramp for mounting by the Instructor or trained Staff.
14. All riders are to be supervised by their caregivers or parents, until handed over to the Staff.
15. No pets are allowed on the property.
16. The swimming pool area is **OFF LIMITS.**
17. Smoking is permitted only in the privacy of your car. Please do not drop butts on the ground.
18. Please obey all signs. They are there for your safety.

Parts of the Horse

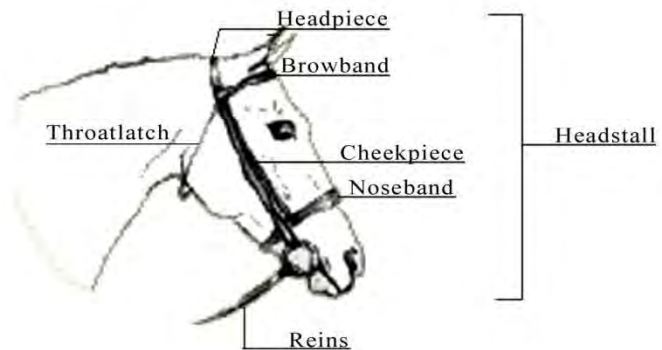


Parts of the Hoof

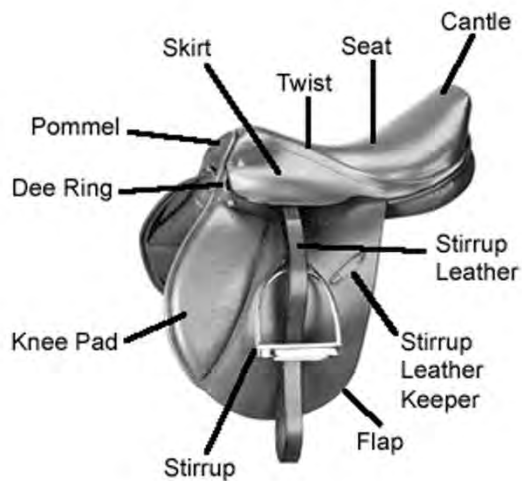
Saddle and Bridle Parts

Special Equestrians uses different kinds of tack (equipment for saddling and bridling a horse), depending on needs of the horse and rider. Here are three of the most common types of tack used at our center.

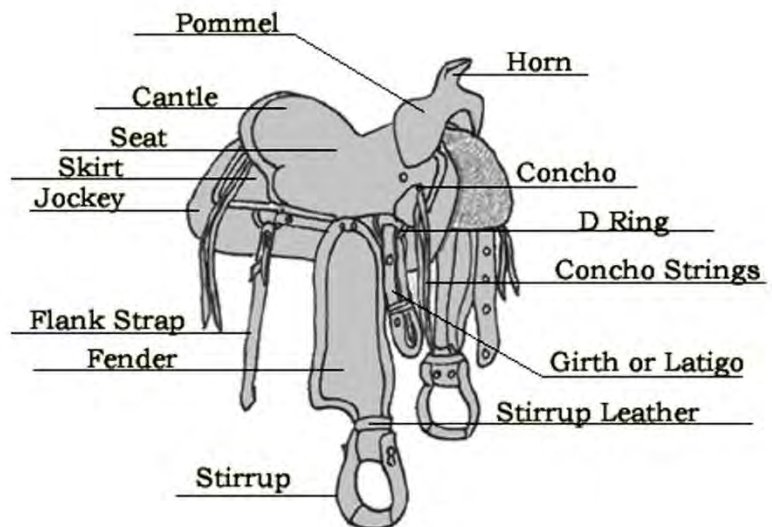
Bridle



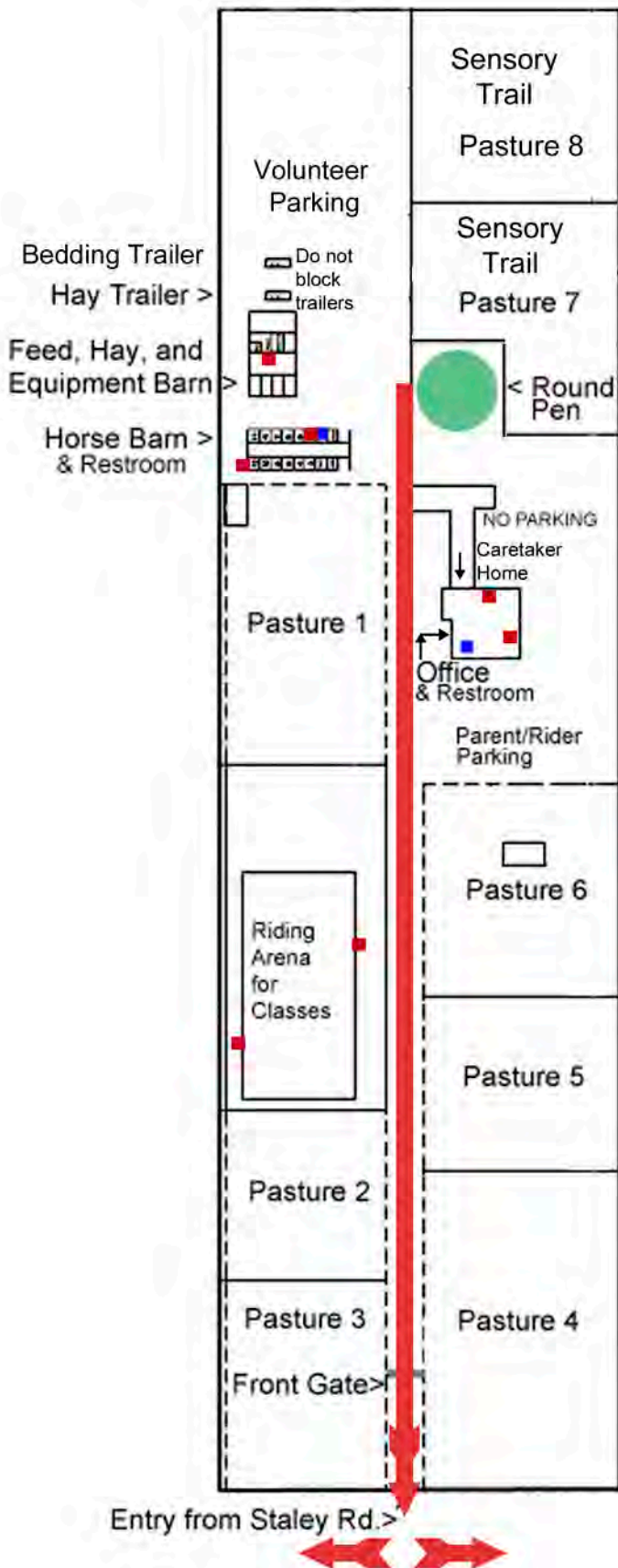
English Saddle



Western Saddle



Special Equestrians Map and Fire Escape Route



Please drive in very slowly as you enter the property.

Volunteers park in the open area behind the equipment barn. Do not block the large trailers as we sell hay and bedding from these trailers.

If you have walking difficulties, you may park close to the barn or the house, but don't block anyone in.


Our office is in the side of the house next the parent and rider parking. Please enter our office from the front of the house. Our Farm Caretaker lives in the other side of the house on the property. The garage is for our Caretaker's entry.

There is a door leading to the ADA Restroom on the west side of the house, next to parent and rider parking.

Special Equestrians sells Guardian Swift Pick horse Bedding all year long, during program times, or by appointment - 239-226-1221.

The fire escape route is down the paved road and out to the front of the property.

Fire Extinguishers are located in 7 places on SE property. They are marked on this map.

 Fire Extinguisher Symbol

 Fire Escape Route Symbol

 Restroom Symbol